



**ALTES KESSELHAUS**  
AREAL BÖHLER | DÜSSELDORF

---

**SILVERWARE AND CRYSTAL GLASSES SERVED IN A COLOSSAL INDUSTRIAL BACKDROP**





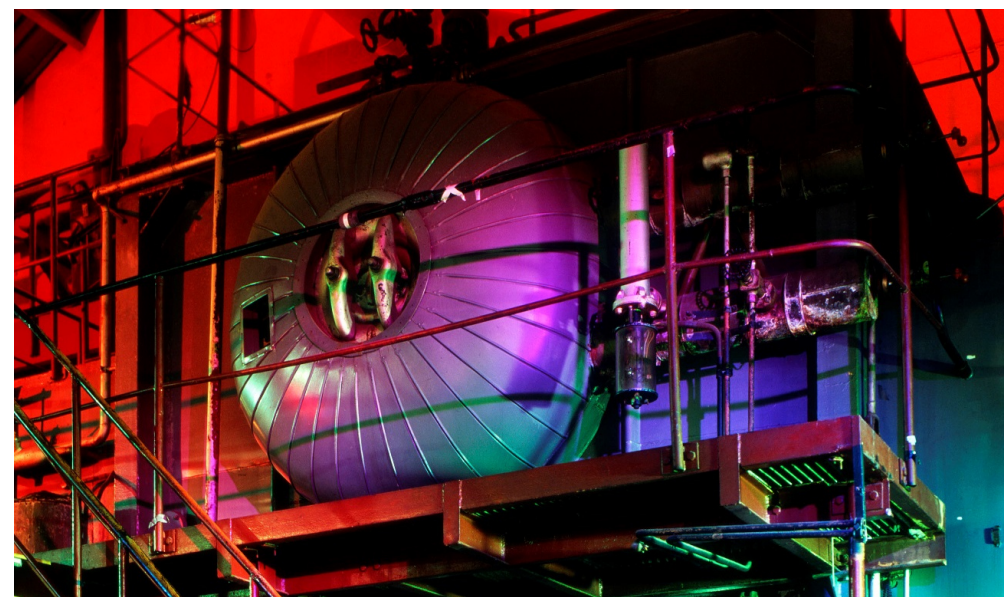
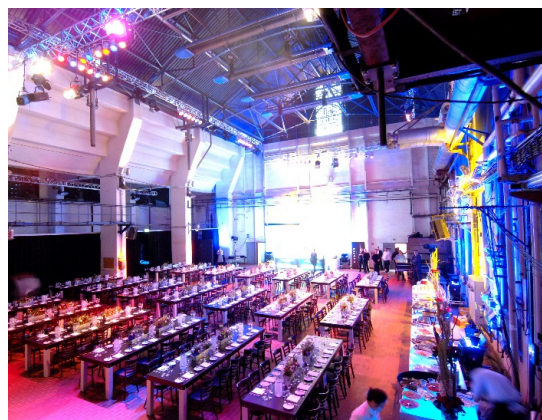
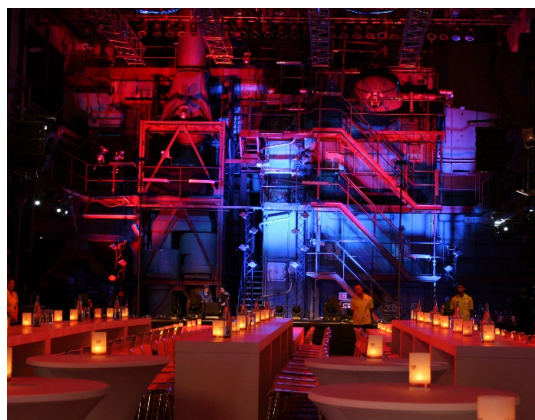
**BROICH** CATERING & LOCATIONS



**ALTES KESSELHAUS**  
AREAL BÖHLER | DÜSSELDORF

A recipe for success within an exciting atmosphere of contrasts!

Events held here range from high-calibre corporate events to after-work parties or product launches, all of which have been stylishly staged here since 1998. Up to 800 guests can be accommodated in the **ALTEN KESSELHAUS**. the **LEHRWERKSTATT** above the venue provide space for receptions having up to 300 people.





## I ALTES KESSELHAUS

SQUARE METERS: 750 m<sup>2</sup>  
OUTSIDE AREA: courtyard 450 m<sup>2</sup>  
DAYLIGHT: No  
PEOPLE: between 120 and 1.000  
higher number of people upon request by special permission

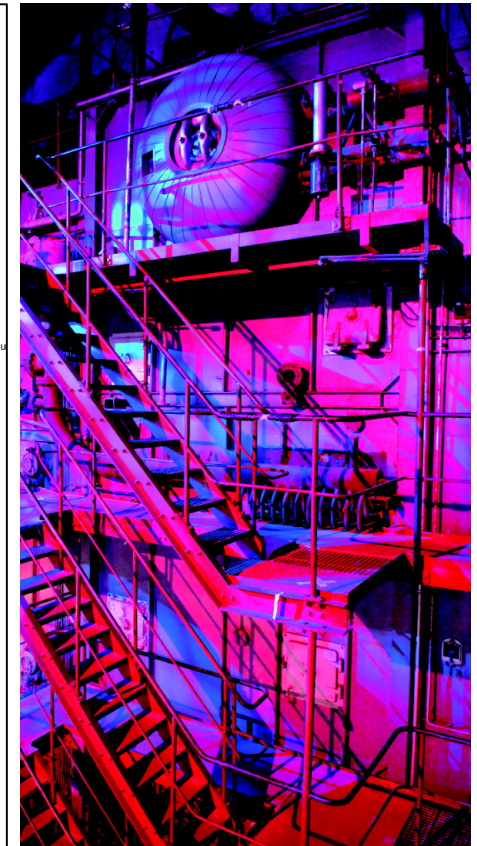
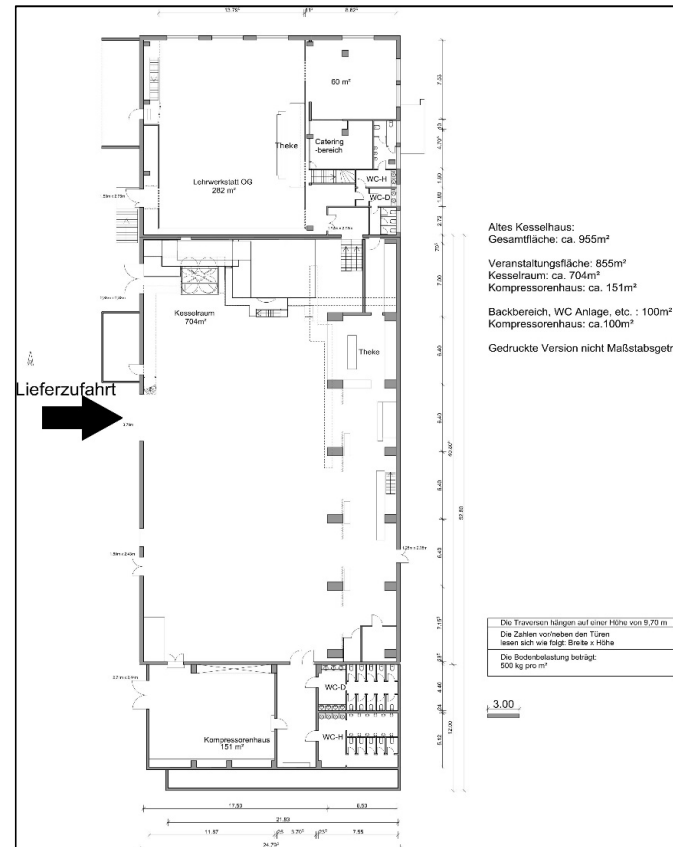
SEATING OPTIONS:  
Row seating: up to 750 people  
Round 10s: up to 350 people  
6 seat block tables: up to 450 people

ADDITIONAL ROOMS: 3 integrated rooms

PARKING: 160 total – more on request  
SCENE: not permanently installed  
CLOAKROOM: installed  
HEATING: installed  
TECHNICAL EQUIPMENT: Eine Grundausstattung ist vorhanden, diese kann angemietet werden.  
MAX. LOAD 500 kg per m<sup>2</sup>, no isolated weight  
CEILING HEIGHT (TRUSS): 9,70 m

ROOM RENTAL (IN EURO, NET.PRICE)  
DAY OF RENT EUR 4.350,00  
SET UP AND TAKE DOWN DAY EUR 1.950,00 per day

ADDITIONAL COSTS  
ELECTRICITY per kW EUR 0,45  
HEATING SET PRICE PER DAY EUR 500,00  
FINAL CLEANING EUR 460,00



BROICHLOCATIONS.COM





## I LEHRWERKSTATT

PEOPLE: between 50 and 300  
SQUARE METERS: 283 m<sup>2</sup>

### SEATING OPTIONS:

Row seating: up to 120 people  
Round 10s: up to 90 people  
6 seat block tables: up to 110 people

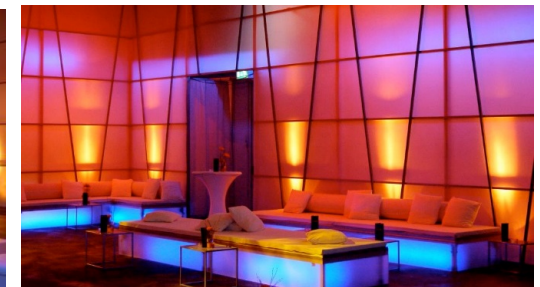
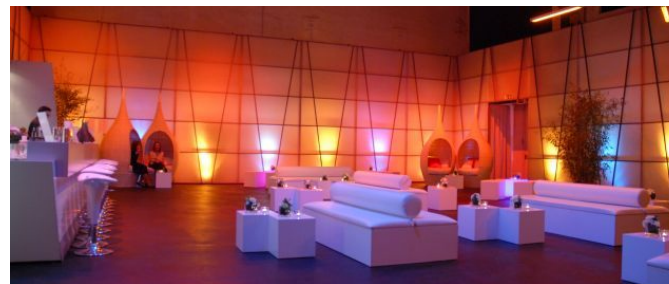
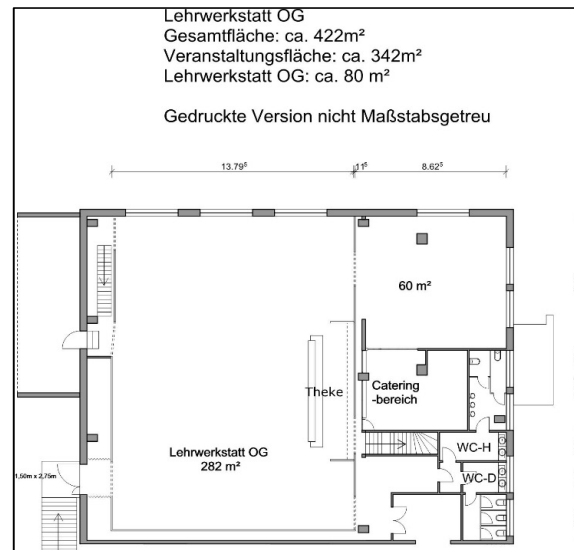
The remaining details are the same as those of the ALTES KESSELHAUS.  
The LEHRWERKSTATT is connected to the ALTES KESSELHAUS by an internal staircase.

### ROOM RENTAL (IN EURO, NET.PRICE)

DAY OF RENT EUR 2.750,00  
SET UP AND TAKE DOWN DAY EUR 1.450,00 per day

### ADDITIONAL COSTS

ELECTRICITY per kW EUR 0,45  
HEATING SET PRICE PER DAY EUR 250,00  
TECHNICAL EQUIPMENT: Preisliste vorhanden  
FINAL CLEANING EUR 250,00



**BROICHLOCATIONS.COM**