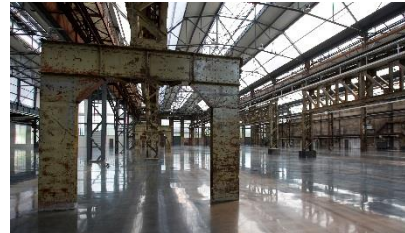




# ALTE **SCHMIEDEHALLEN**

AREAL BÖHLER | DÜSSELDORF

**ONCE A BUSY FACTORY, TODAY A GLAMOROUS INDUSTRIAL BACKDROP**

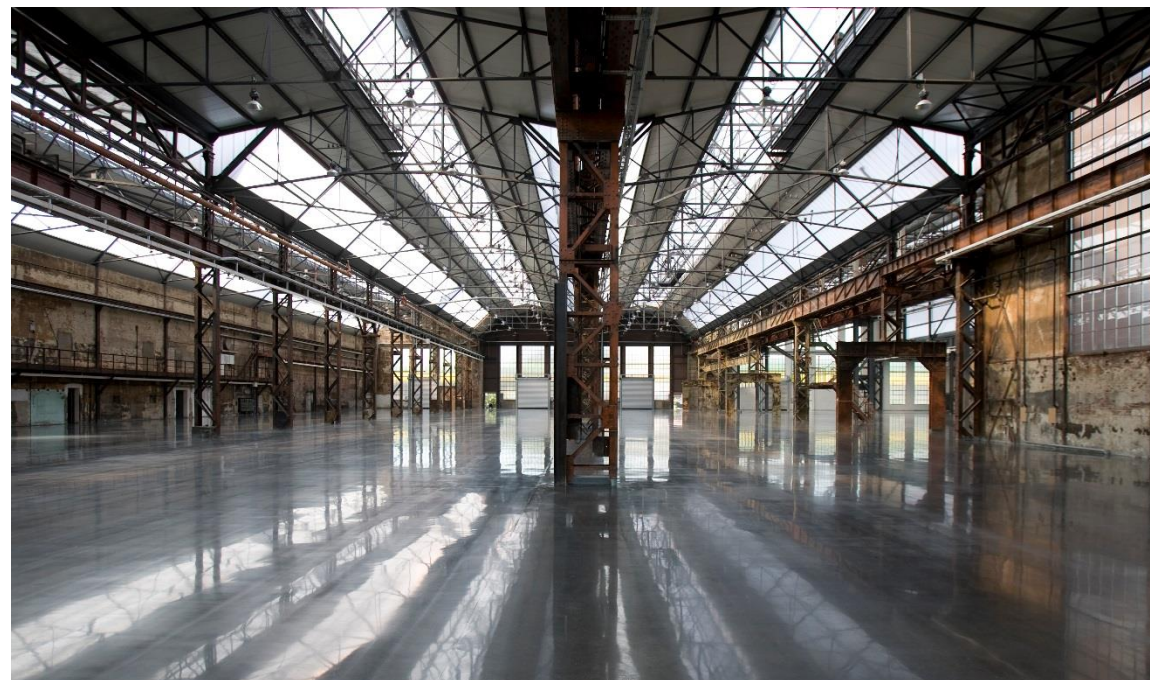
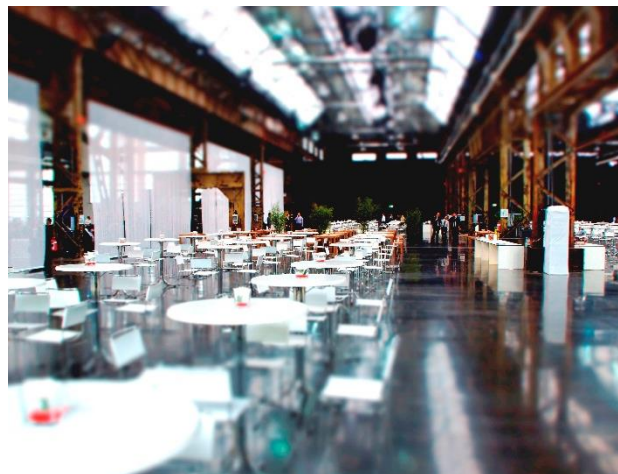




**ALTESCHMIEDEHALLEN**  
AREAL BÖHLER | DÜSSELDORF

With the completion of the renovation in July 2012, the former production halls were transformed into modern event locations. The result has been hailed as a success! In particular the distinctive character of the industrial setting has been preserved, which makes it a perfect location for (domestic) trade fairs, exhibitions and presentations.

The historic, robust steel girders are in their original condition, and together with the still existing masters office, it provides an industrial backdrop with a certain charm. The roof and windows are translucent and have been renovated with frosted glass and the industrial floors are redesigned and polished. The hall with 8,000 m<sup>2</sup> of event space can be divided into four rooms.







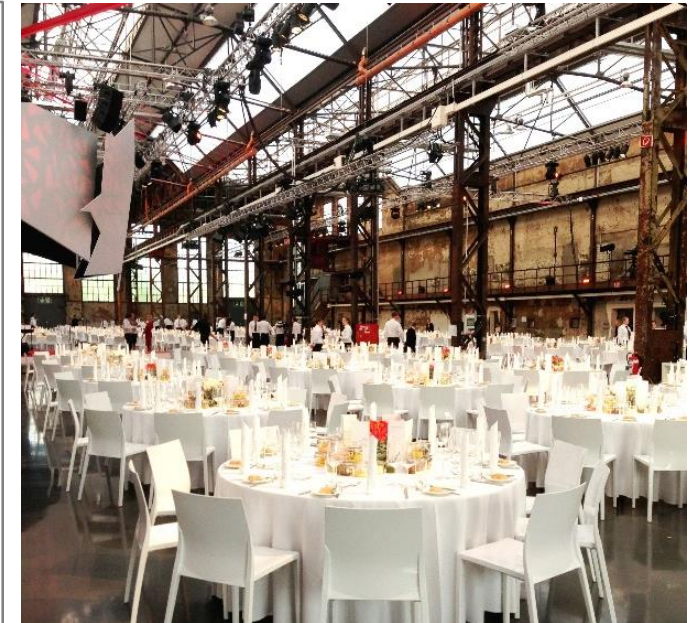
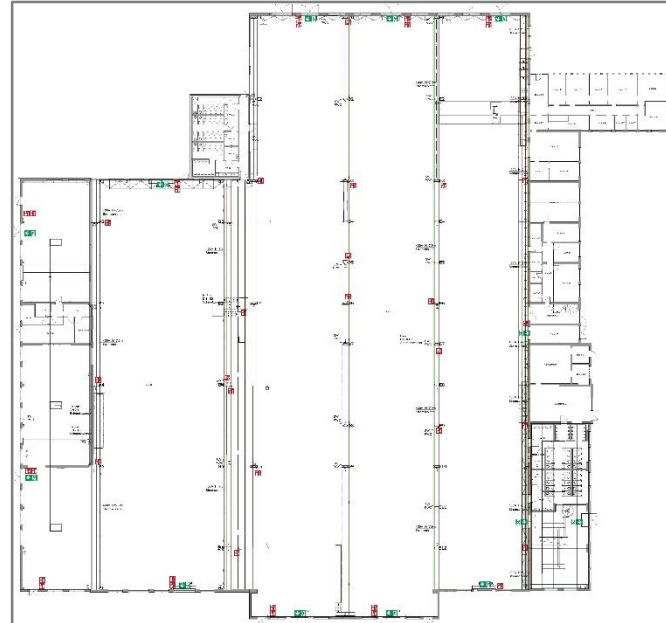
SQUARE METERS: 8.000 m<sup>2</sup>  
DAYLIGHT: yes  
PEOPLE: 3.900  
higher number of people upon request by special permission

SEATING OPTIONS:  
Row seating: 3.900  
Round 10s: 3.900  
Blocked tables: 3.900

PARKING: 455 total – more on request  
SCENE: not permanently installed  
CLOAKROOM: not permanently installed  
HEATING: installed  
TECHNICAL EQUIPMENT: to be supplied by organiser  
MAX. LOAD: 10 t per m<sup>2</sup> no isolated weight  
CEILING HEIGHT (TRUSS)  
hall 33: 10,65 m  
hall 34: 16,50 m

ROOM RENTAL (IN EURO, NET. PRICE)  
DAY OF RENT EUR 18.500  
SET UP AND TAKE DOWN DAY: EUR 10.500 per day

ADDITIONAL COSTS:  
ELECTRICITY per kW EUR 0,45  
FINAL CLEANING after actual expenditure  
INTERMEDIATE CLEANING EUR 26,50 per hour



**BROICHLOCATIONS.COM**