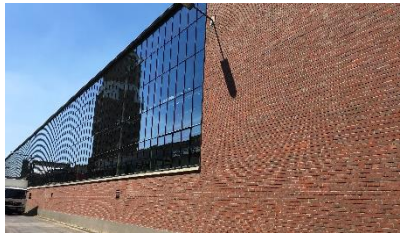




KALTSTAHLHALLEN
AREAL BÖHLER | DÜSSELDORF

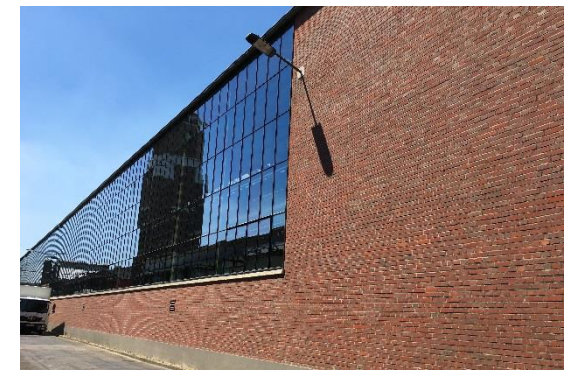
DAYLIGHT & INDUSTRIAL CHARM





KALTSTAHLHALLEN
AREAL BÖHLER | DÜSSELDORF

With the **KALTSTAHLHALLEN**, we offer the ideal complement to the existing locations on the **AREAL BÖHLER**. They are an excellent place for conferences, meetings, kick-offs and presentations of large products and innovations, such as cars or even trucks. Being close to the **HALLE AM WASSERTURM** and the **ALTE SCHMIEDEHALLEN**, the **KALTSTAHLHALLEN** offer using tent compounds an area of up to 15,000 square meters.



Currently usable part:

KALTSTAHLHALLE I: 2.300 m²

DAYLIGHT:

yes

PEOPLE (CURRENTLY):

up to 1.200

SEATING OPTIONS:

Row seating: 1.200

Round 10s: 1.000

Blocked tables: 1.000

PARKING: available

SCENE: not permanently installed

CLOAKROOM: not permanently installed

HEATING: installed

TECHNICAL EQUIPMENT: to be supplied by organiser

MAX. LOAD: 500 kg per m² - no isolated weight!

CEILING HEIGHT (TRUSS) 11,30 m

ROOM RENTAL (IN EURO, NET. PRICE)

DAY OF RENT	EUR 9.500,00
-------------	--------------

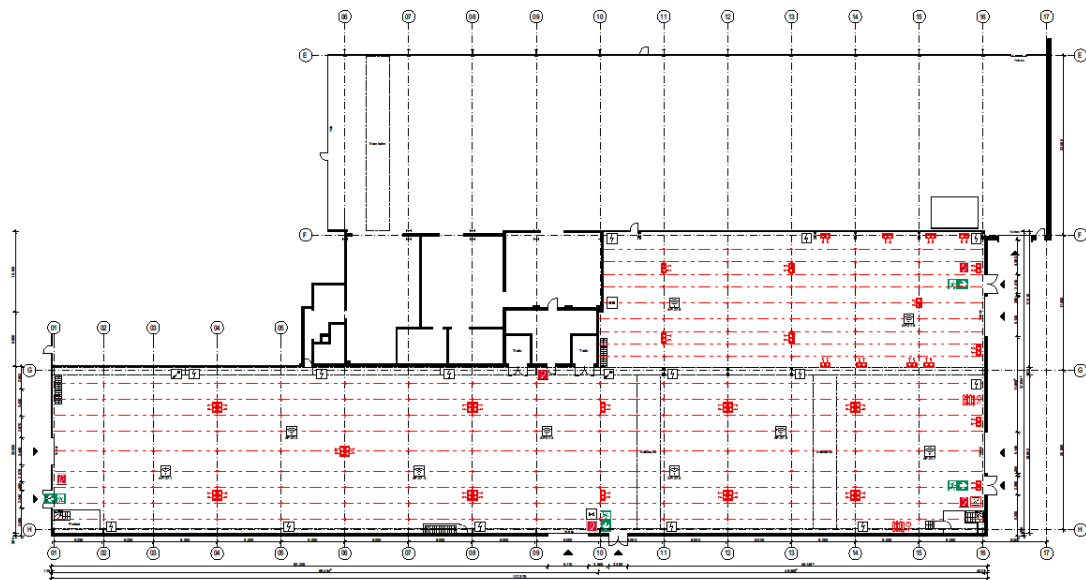
SET UP AND TAKE DOWN DAY: EUR 4.000,00 / per day

ADDITIONAL COSTS:

ELECTRICITY per kW EUR 0,45

HEATING SET PRICE PER DAY after gas consumption

INTERMEDIATE CLEANING	EUR 750,00
-----------------------	------------



Legende Symbole	
	Rücklicht
	Feuerlöscher T.p.a.B. 12kg
	Feuerlöscher T.p.a.B. 12kg
	Netzwerk Anschlusspunkt
	Elektronische Wasserdichten
	Es stehen folgende Werkzeuge zur Verfügung spezielle Ausrüstung für die Installation: 1x 230V, 1x 630V 1x 1000V, 1x 1000V 1x 1000V, 1x 1000V 1x 1000V, 1x 1000V
	Werkzeuge
	Werkzeuge mit Einstellungsrichtung
	Zusatzwerkzeug
	Abwasser
	Erweiterung der Haltevorrichtung



BROICHLOCATIONS.COM